



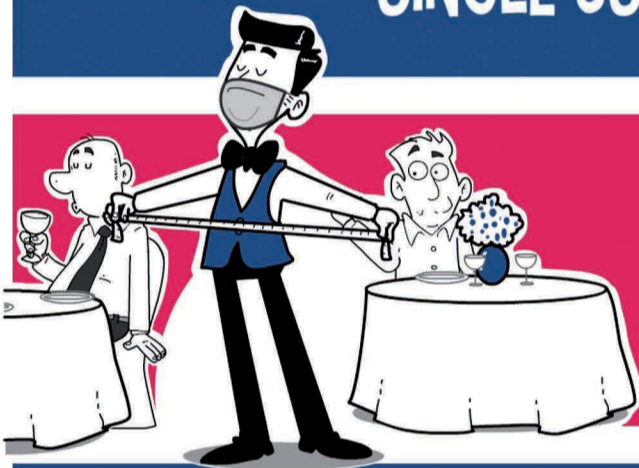
8

SANITIZE MENUS AFTER USE, OR SEND
DIGITAL MENUS
TO THE DEVICES OF CUSTOMERS



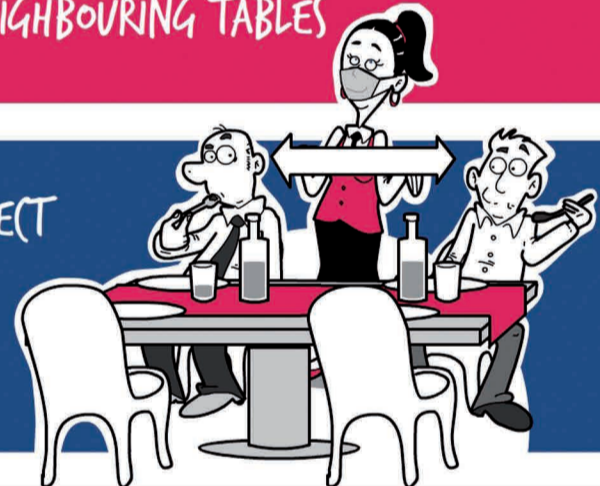
9

SANITIZE OBJECTS FOR THE USE OF CUSTOMERS
BEFORE PROVIDING THEM, OR PROVIDE
SINGLE USE/DISPOSABLE ITEMS



10

ARRANGE THE TABLES SO AS TO ENSURE CORRECT
DISTANCING AMONG DINERS
SEATED AT NEIGHBOURING TABLES



11

ON REQUEST, THE STAFF ARE TO ENSURE CORRECT
DISTANCING AMONG DINERS SEATED
AT THE SAME TABLE

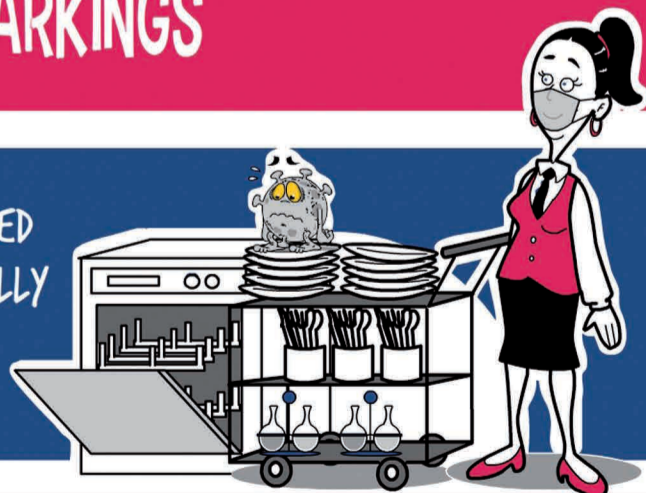


12

PREFER DIGITAL PAYMENT METHODS. ALTERNATIVELY,
ENSURE DISTANCING FROM CASH DESK BY MEANS OF
FLOOR MARKINGS

13

ALL (UTLERY, PLATES AND DISHES, WHETHER USED
OR NOT BY THE CUSTOMER, ARE TO BE CAREFULLY
WASHED AND DISINFECTED



14

ALL NAPKINS AND TABLECLOTHS ETC. ARE TO BE
THOROUGHLY WASHED AND PLACED IN
SPECIAL LAUNDRY BAGS